

Deep sea monsters



Ewa Stawiarska & Piotr Menducki
www.kamyk.pl

ABOUT US

We are a small company from Poland located in Ostrowiec Świętokrzyski.

We do our job with joy and pleasure, as we are passionate and fully engaged in it. The quality, service and meeting the deadlines are guaranteed - special deals can be made according to the museums requirements. We cooperate with various artists and scientists - if only the latter ones are willing to. ;) Gradual upgrading of the materials assortment being used for the models and scenography production is crucial in our job.

So far we have collaborated with, and prepared exhibitions and models for:

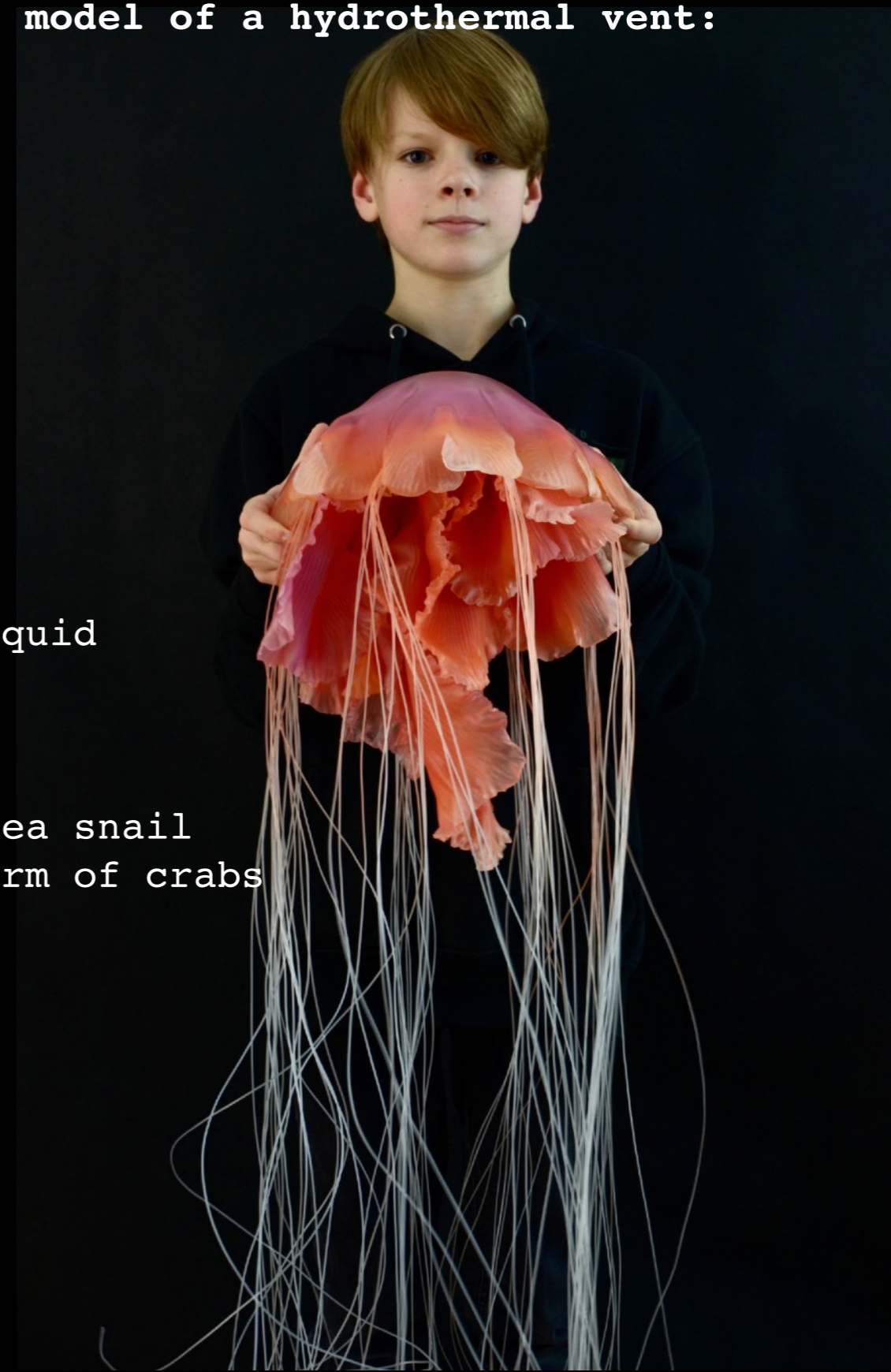
- Nature Education Centre - Jagiellonian University
- Professor Andrzej Myrcha University Center of Nature, University of Białystok
- Geonatura Kielce - Geoeducation Center
- Kepler Science Center - Zielona Góra
- Oceanika
- Nature and Educational Center "Natural Museum of the University of Łódź"
- German Oceanographic Museum - MEERESMUSEUM in Stralsund
- Moab Giants Dinosaur Park & Museum in Moab, Utah
- Martinique Sea Museum
- NaturBornholm
- Museum of the World Ocean in Kaliningrad
- Dinosaur Isle Museum - The Isle of Wight
- University Bochum
- Aathal Dinosaur Museum - Switzerland
- University of Lausanne - Switzerland
- The European Consortium for Ocean Research Drilling - France



Offer for the exhibition Deep sea monsters.

The exhibition consists of 23 display cases and a model of a hydrothermal vent:

- nr 1 - Himantolophus fish
- nr 2 - Caulophryne pelagica fish
- nr 3 - Thaumatichthys binghami fish
- nr 4 - Pandeia rubra jellyfish
- nr 5 - Grimpoteuthis octopus
- nr 6 - Melanocetus johnsonii fish
- nr 7 - Bathynomus giganteus isopod
- nr 8 - Chauliodus sloani fish
- nr 9 - Psychrolutes marcidus fish
- nr 10 - Linophryne arborifera fish
- nr 11 - Argyropelecus hemigymnus fish
- nr 12 - Vampyroteuthis infernalis - the vampire squid
- nr 13 - Eunice aphroditois worm
- nr 14 - Macropinna microstoma fish
- nr 15 - Cyanea capillata jellyfish
- nr 16 - Helicina limacina - swimming planktonic sea snail
- nr 17 - Zoea - free-swimming planktonic larval form of crabs
- nr 18 - Euphausia superba - antarctic krill
- nr 19 - Aurelia aurita - jellyfish
- nr 20 - Oithona & Cyclops - copepods
- nr 21 - Ceriodaphnia - water flea
- nr 22 - Physalia physalis - marine hydrozoan
- Nr 23 - Aequorea victoria jellyfish
- Nr 24 - model of a hydrothermal vent



We also have models for presentation in the Customer's display cases, including:

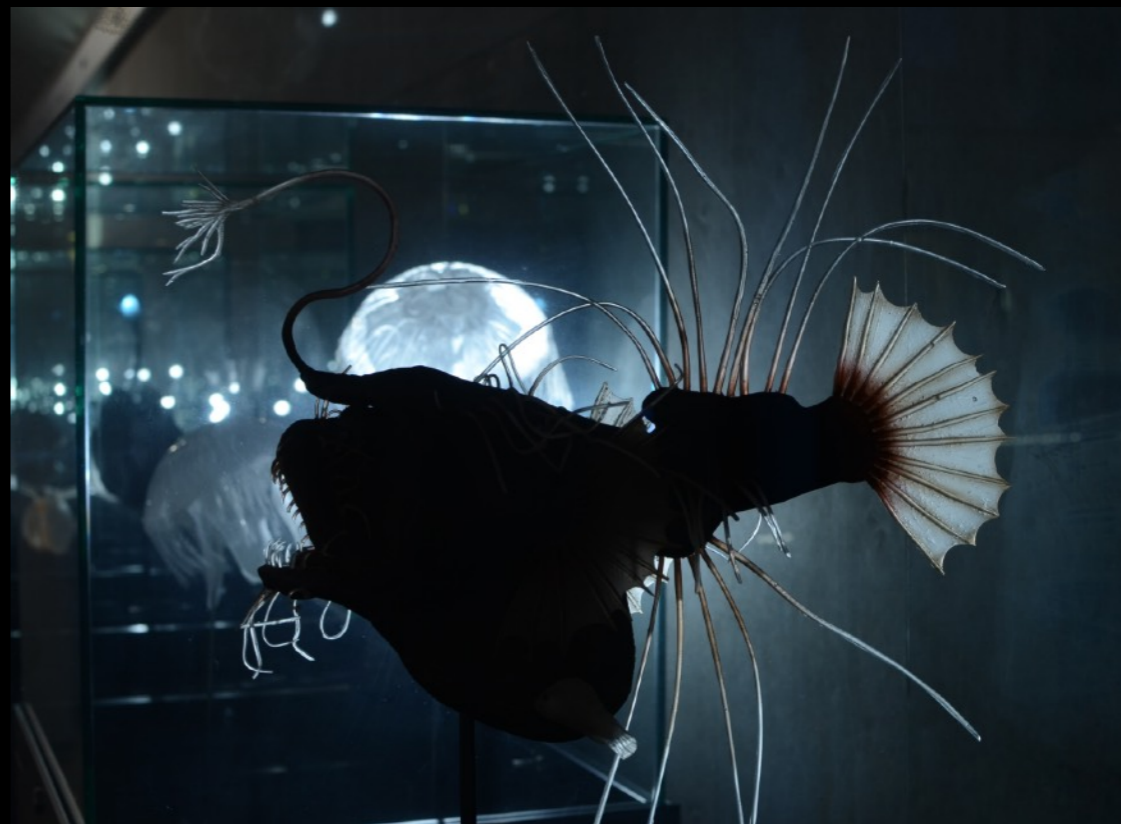
- 1 - *Sepia latimanus* cuttlefish
- 2 - *Clione limacina* - pelagic sea slug
- 3 - *Flabellina*, *Pseudobiceros nudibranches*
- 4 - *Elysia chlorotica* sea slug
- 5 - *Amphioctopus marginatus* octopus
- 6 - *Kinorhyncha*
- 7 - *Chironex fleckeri* jellyfish
- 8 - *Beroe*
- 9 - *Gigantactis* fish
- 10 - *Chimera* fish
- 11 - *Omosudis lowii* fish
- 12 - *Barbourisia rufa* fish
- 13 - *Neoceratias spinifer* fish
- 14 - *Chiasmodon niger* fish
- 15 - *Lasiognathus amphirhamphus* fish
- 16 - *Oneirodes* fish
- 17 - *Glaucus atlanticus* sea slug
- 18 - *dinoflagellata Phalacroma rotundatum*
- 19 - *Epiplocypris blanda* - *Tintinnina*
- 20 - *Cetostoma regani* fish
- 21 - *Rondeletia loricata* fish
- 22 - *Calanus* copepod
- 23 - *Saturnalis* sp. - radiolaria
- 24 - *Echiniscus* sp. - tardigrade
- 25 - *Elphidium* sp. - genus of foraminifera
- 26 - *Oolina* sp. - genus of foraminifera
- 27 - *Thalassiosira* sp. - genus of centric diatoms









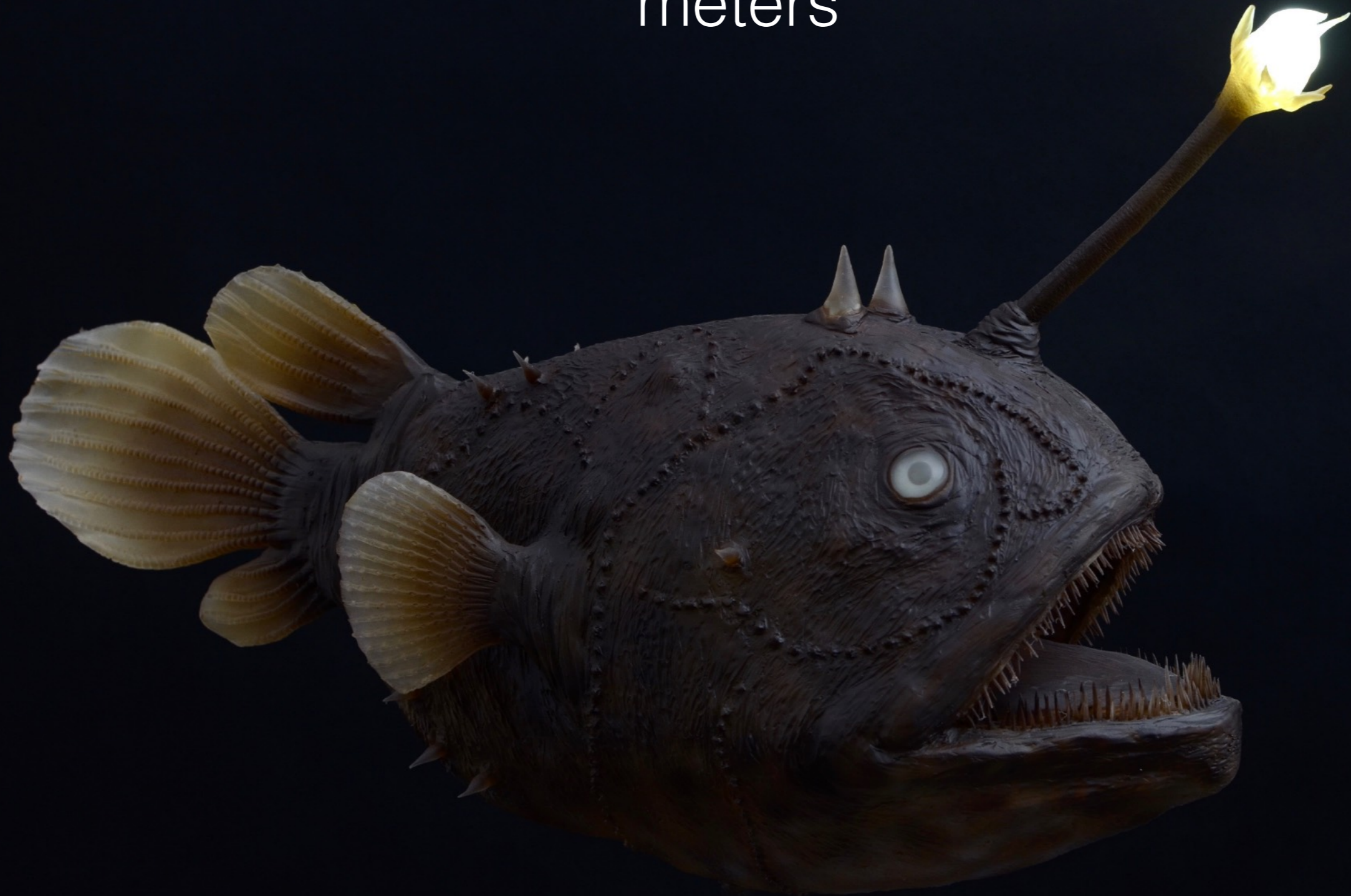








Himantolophus paucifilosus
lives at a depth between 1,000 and 4,000
meters



Caulophryne pelagica

lives at a depth between 700 and 3000 meters

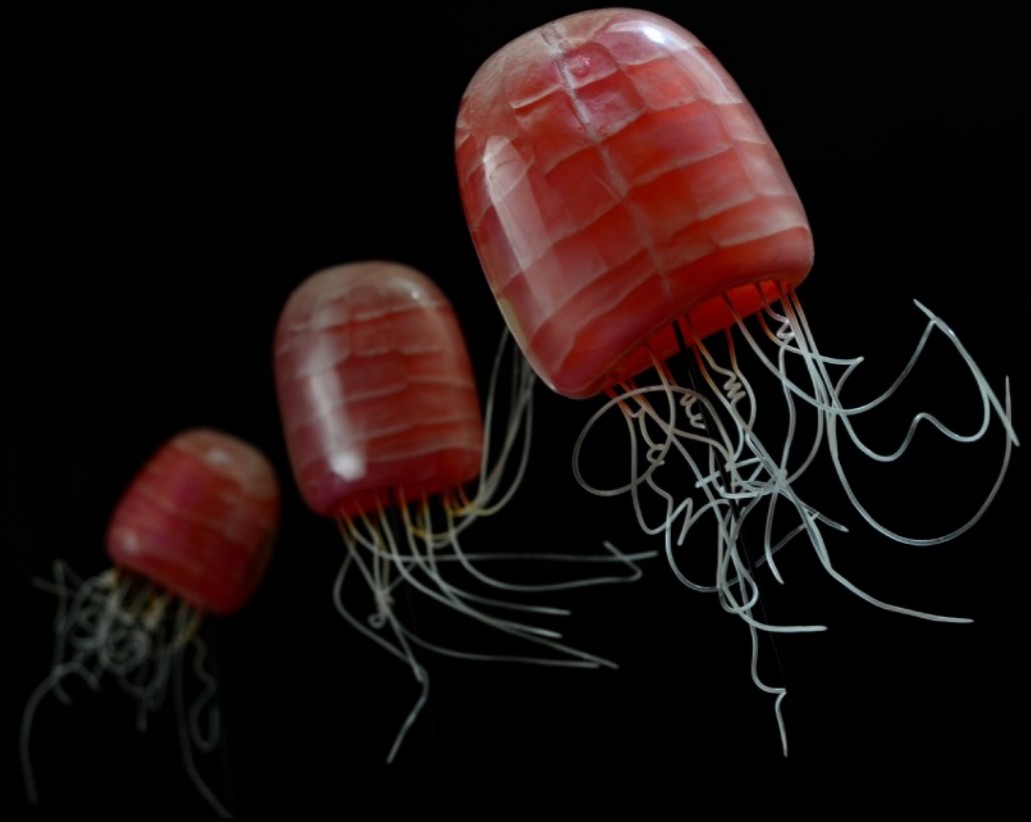
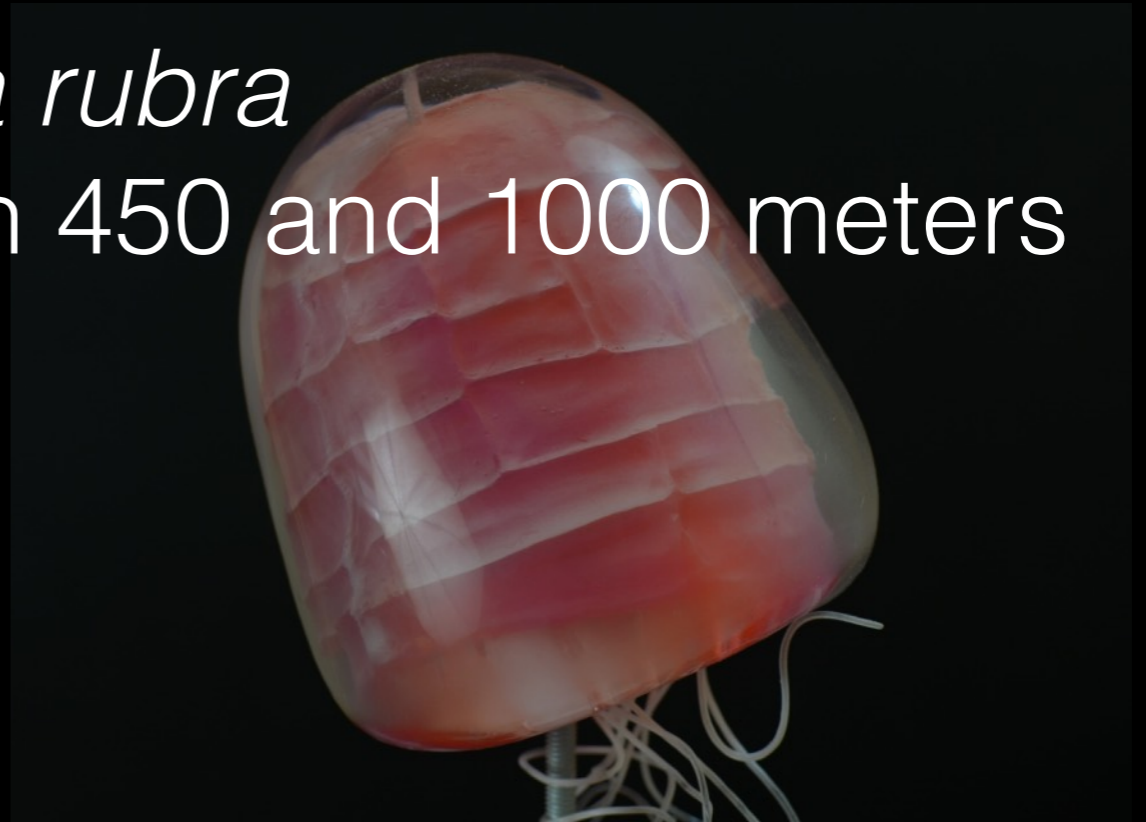
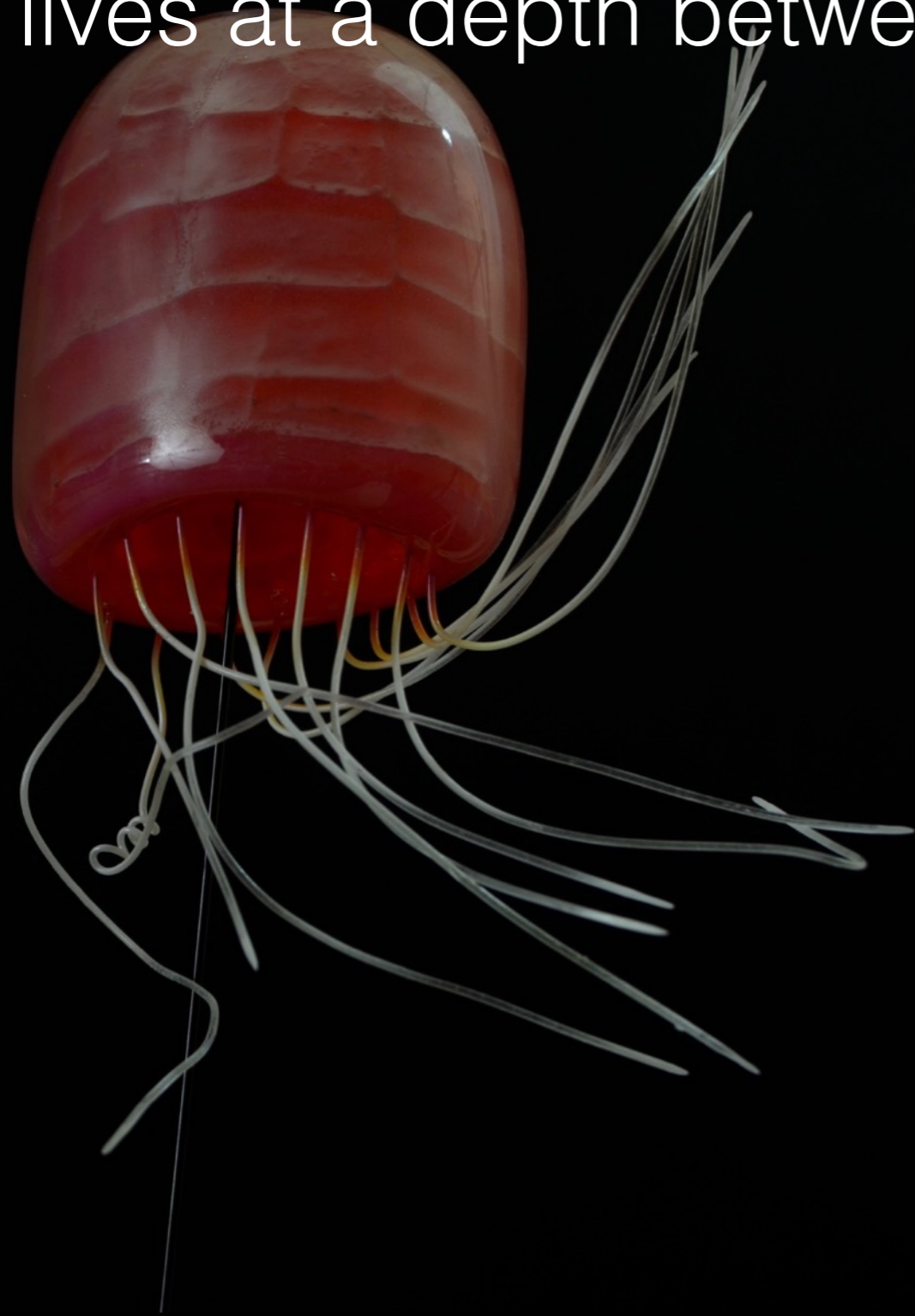


Thaumatichthys binghami
lives at a depth of around 2,400 meters



Pandea rubra

lives at a depth between 450 and 1000 meters



Grimpoteuthis

lives at a depth between 300 and 5000 meters



Melanocetus johnsonii
lives at a depth between 1,000 and 4,000
meters



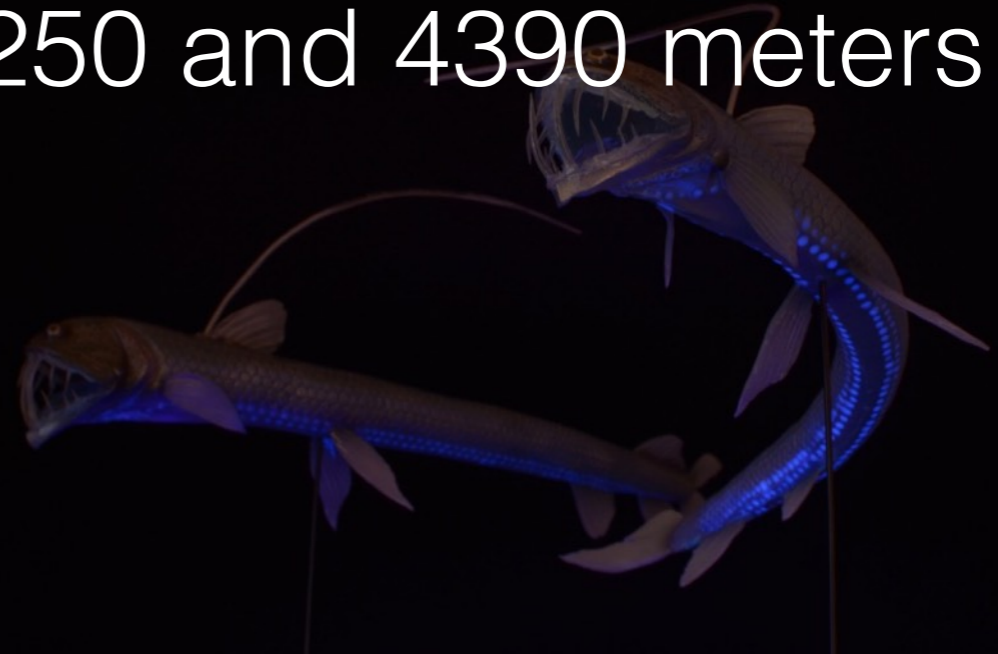
Bathynomus giganteus

lives at a depth between 310 and 2140 meters



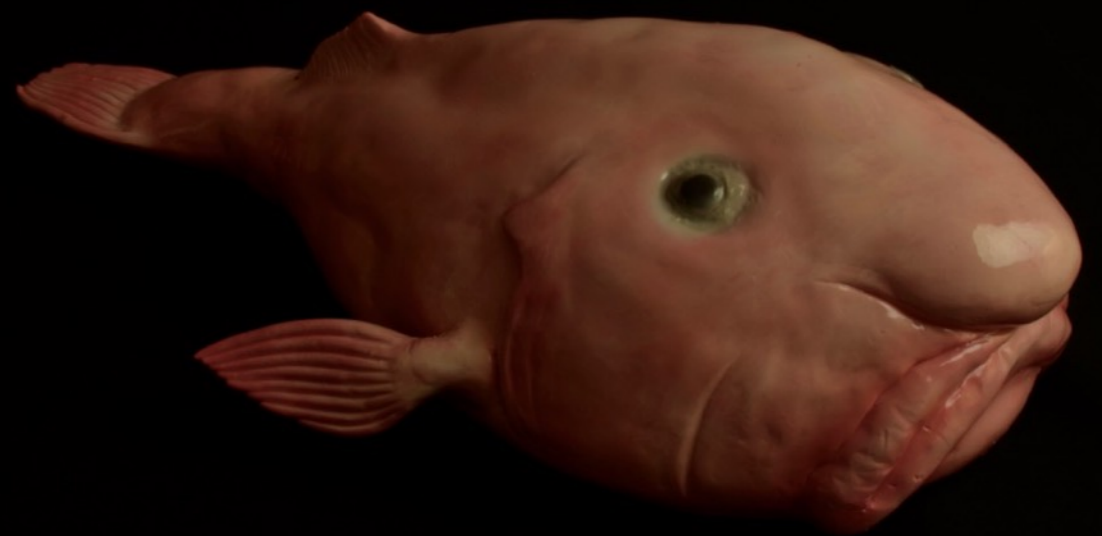
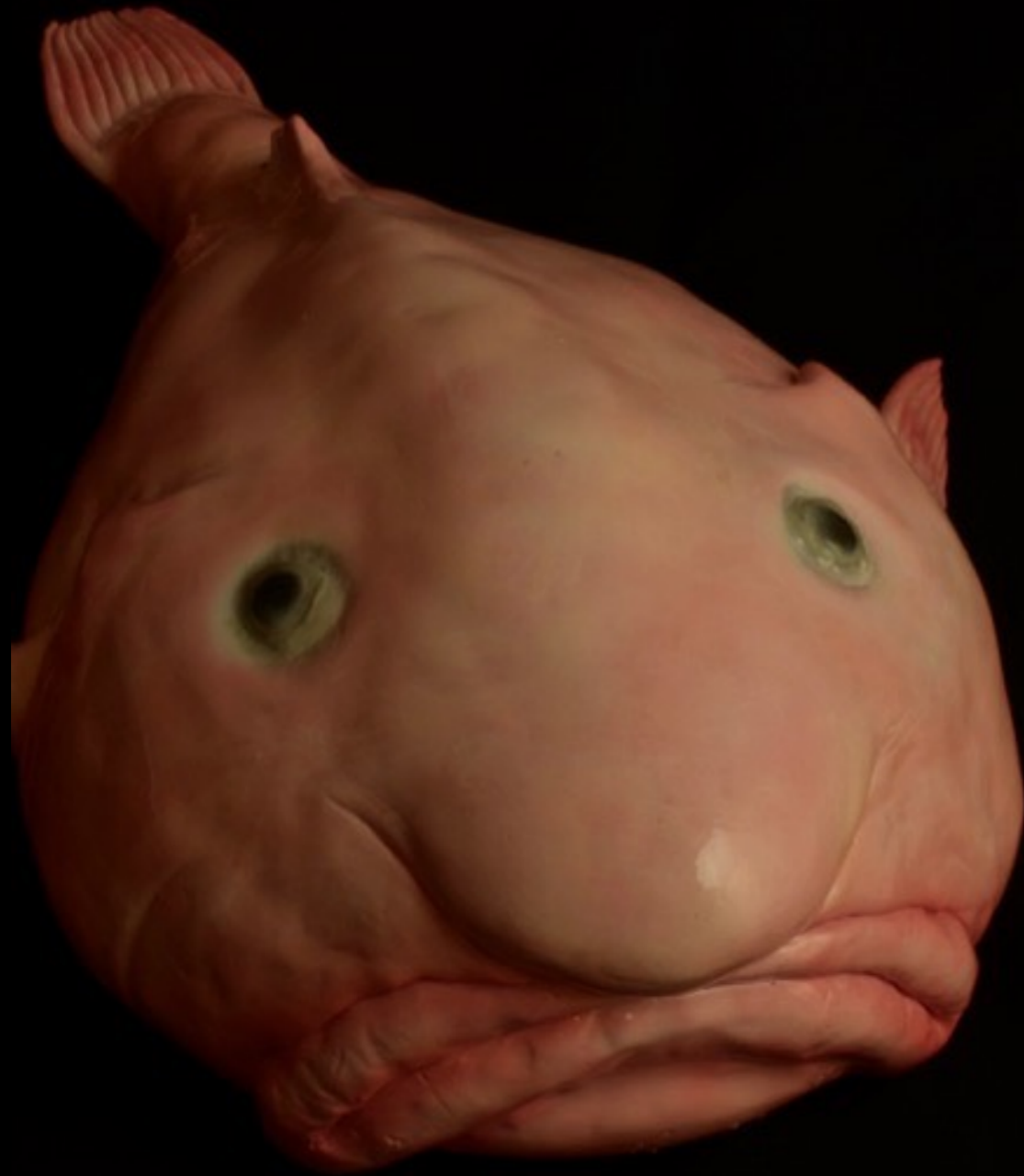
Chauliodus sloani

lives at depths between 250 and 4390 meters

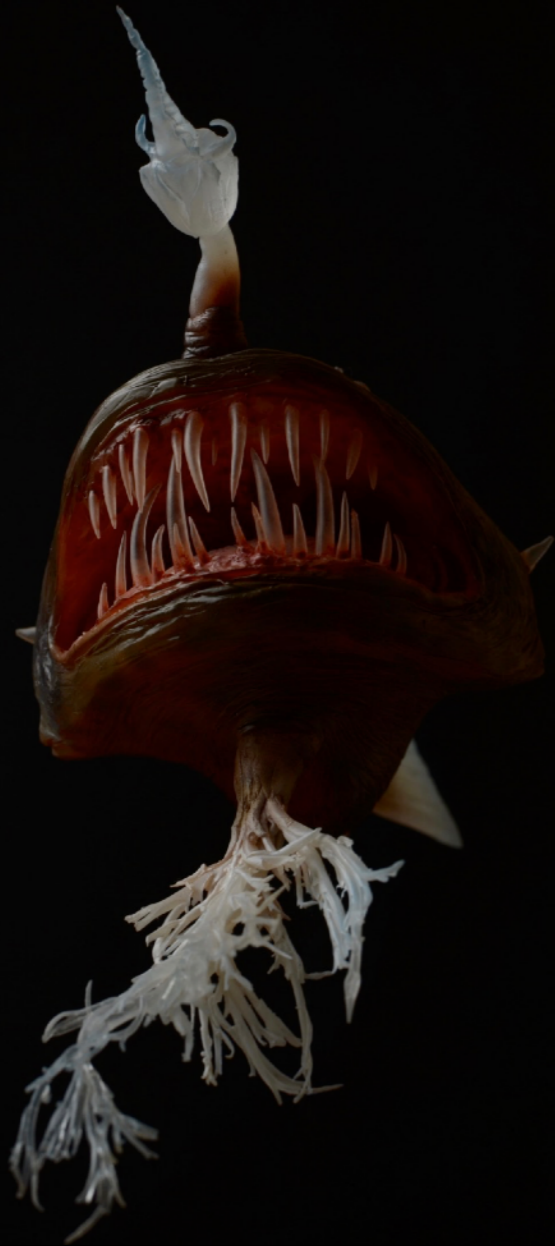


Psychrolutes marcidus

lives at a depth between 600 and 1200 meters



Linophryne arborifera
lives at a depth of around 1000 meters



Argyropelecus hemigymnus
lives at a depth of around 2,400 meters



Vampyroteuthis infernalis

lives at a depth between 650 and 1500 meters



Eunice aphroditois



Macropinna microstoma

lives at a depth between 600 and 770 meters



Cyanea capillata



Helicina limacina



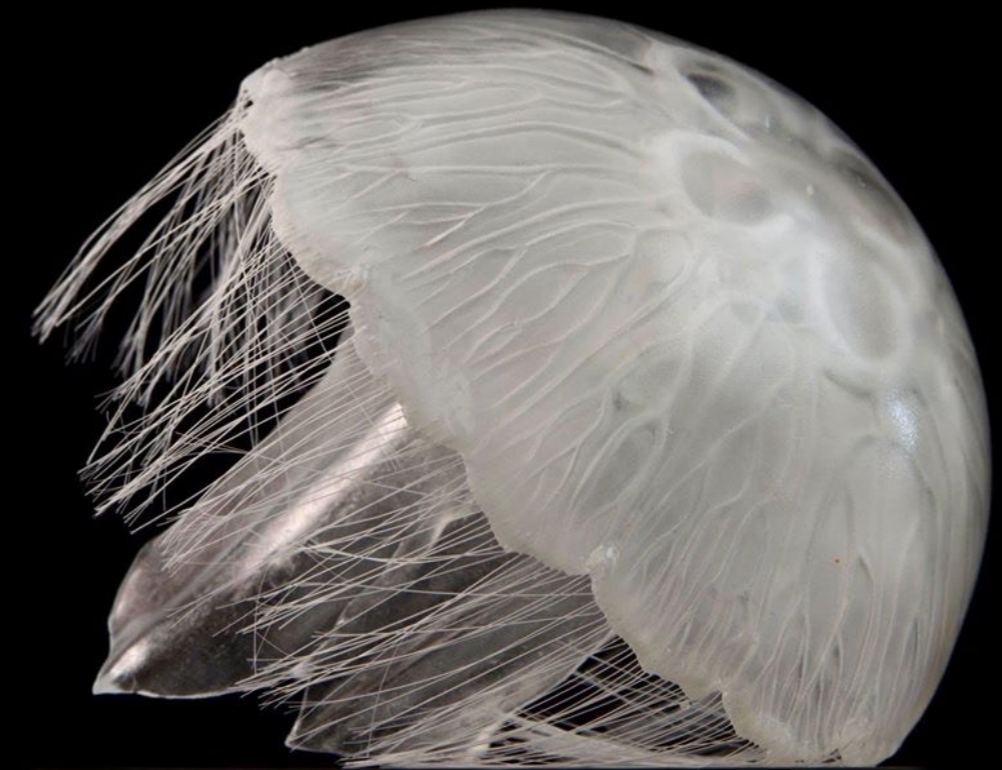
Zoea



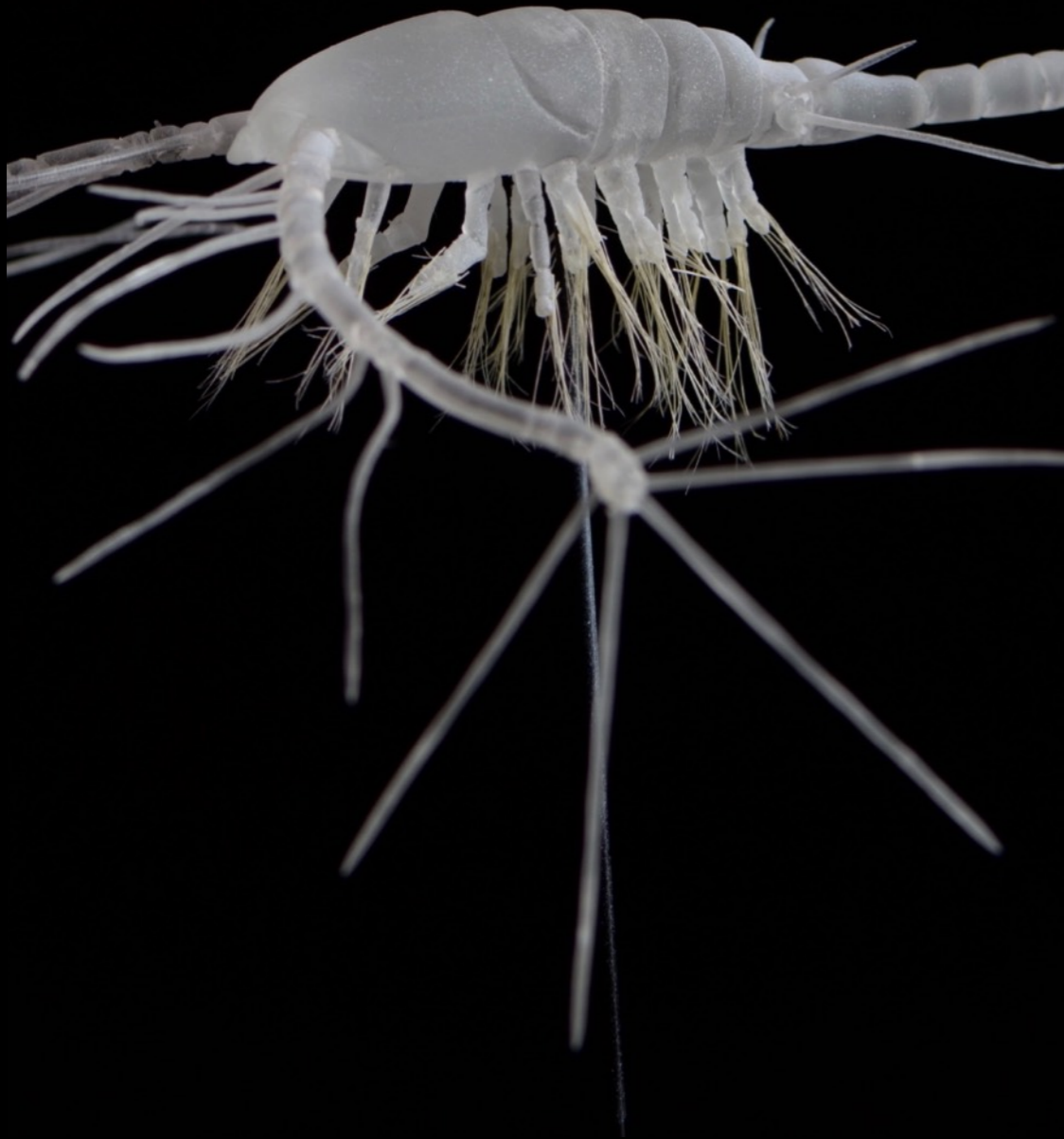
Euphausia superba



Aurelia aurita



Oithona i *Cyclops*



Ceriodaphnia



Physalia physalis





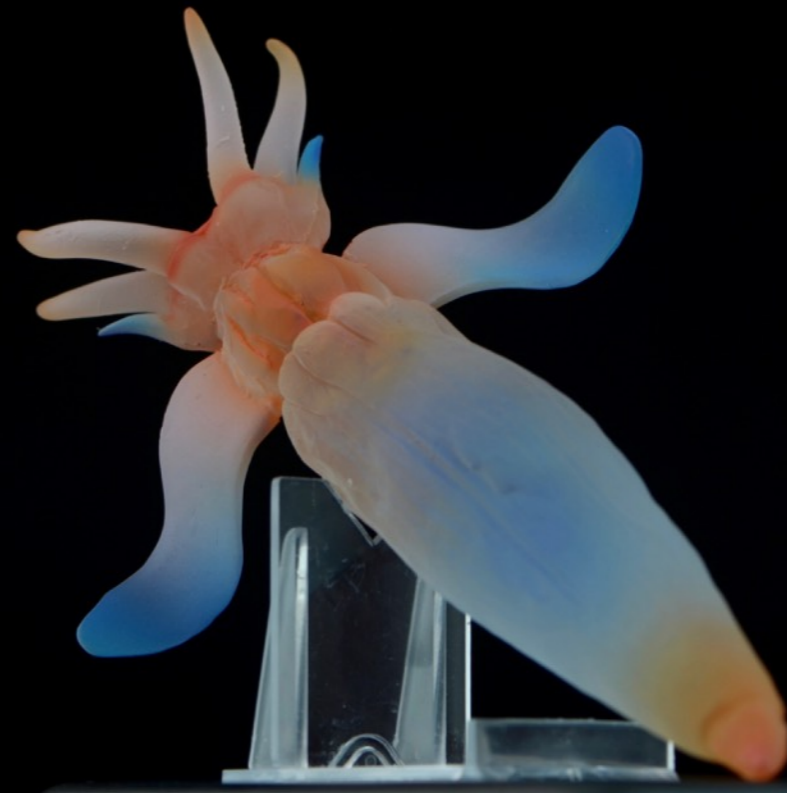
Chironex fleckeri



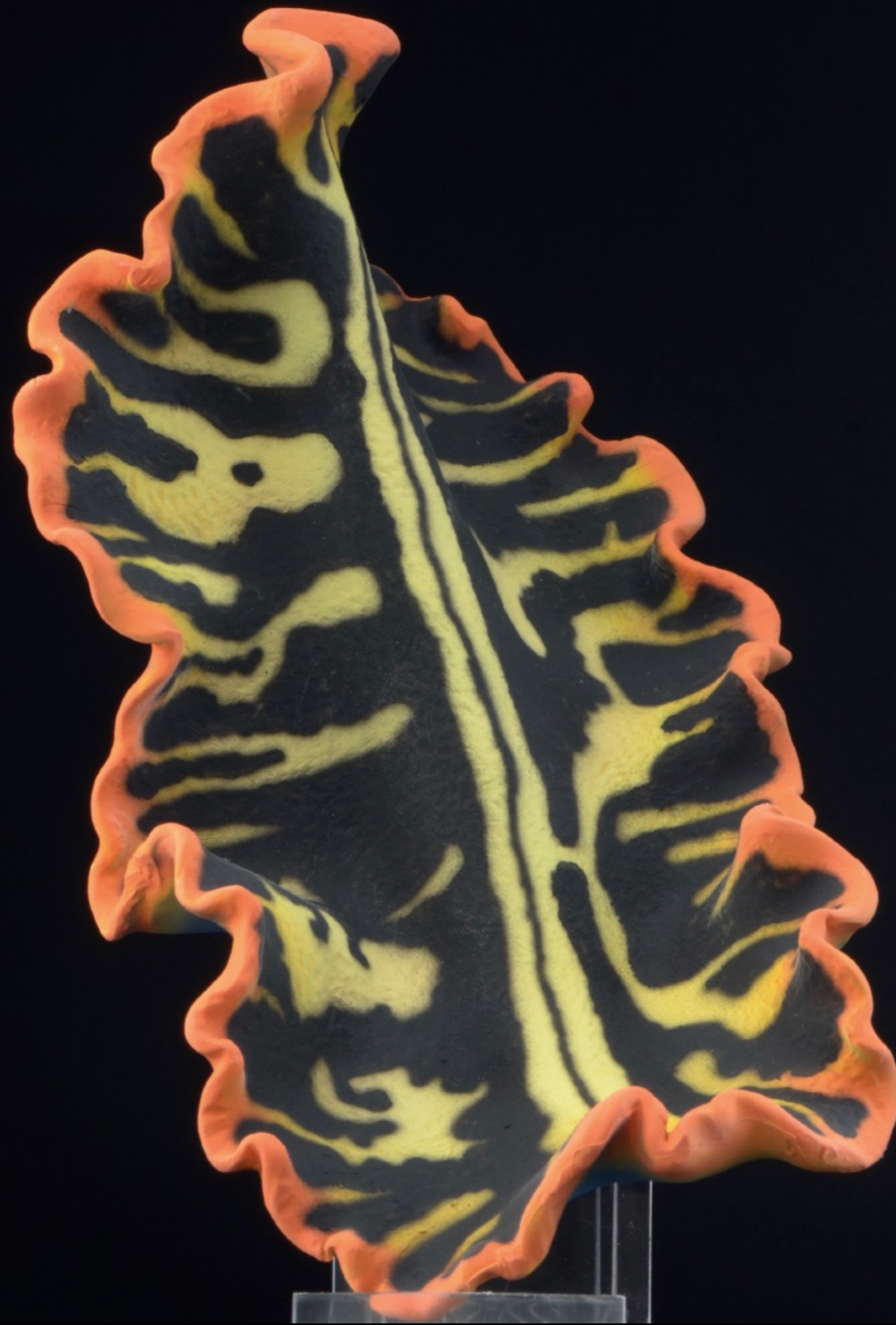
Sepia latimanus



Clione limacina



Pseudobiceros



Elysia chlorotica



Amphioctopus marginatus





Beroe



Gigantactis



Barbourisia rufa



Neoceratias spinifer



Chiasmodon niger



Lasiognathus ampirhamphus



Oneirodes



Glaucus atlanticus



Epiplocytilis blanda



Cetostoma regani



Rondeletia loricata



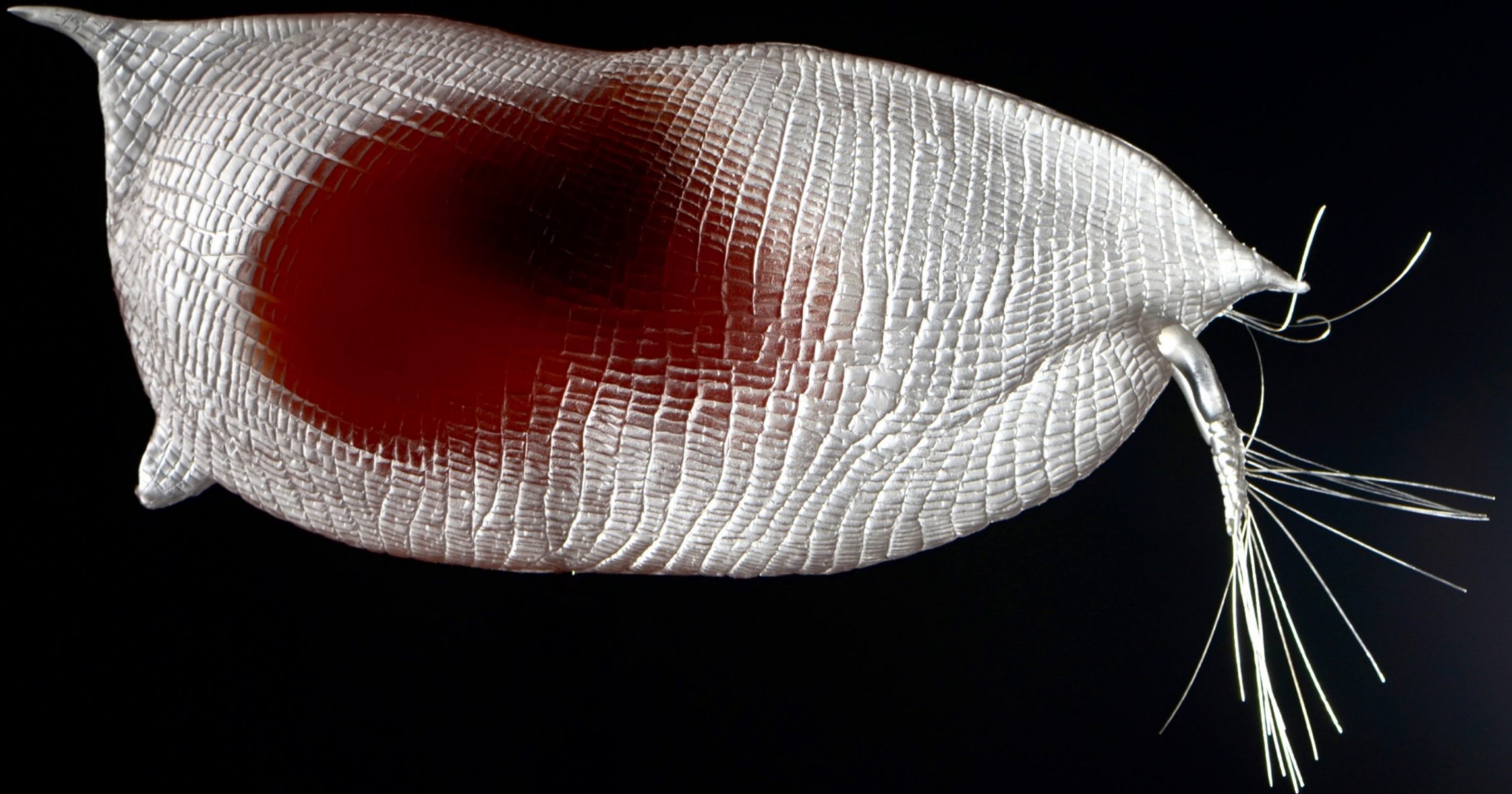
Calanus



Saturnalis

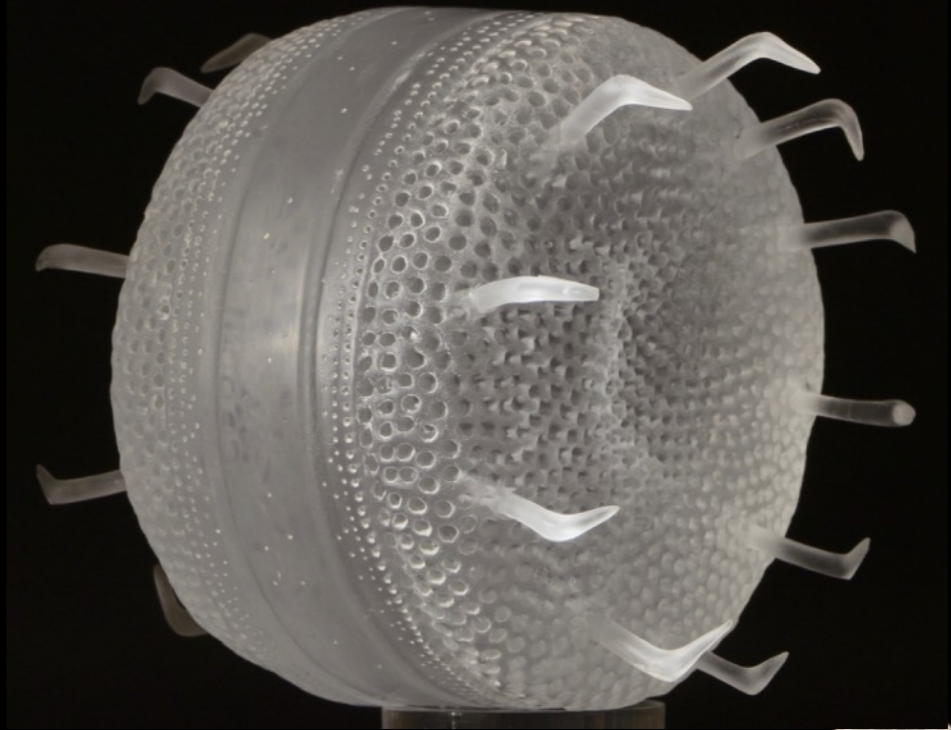


Conchoecissa ametra



Echiniscus sp.





RENTAL CONDITIONS:

- the exhibition is available from January 2026
 - the minimum rental period is 6 months
 - the rental cost is 1,500 euros NET per month
 - the lessee covers the transport costs
 - the lessee insures the exhibition for 65,000 euros
- detailed rental conditions are specified in the contract

Contact:

Piotr Menducki
email - paleo@kamyk.pl
mobile +48 530 526 314
www.kamyk.pl